

15mm Gyproc Plasterboard fixed to Gyproc Gyprframe 92550 °C Studs @600 c/c Metal Studs

Porotherm Parge Coat applied to Internal side of Blockwork

215mm Concrete Block on Flat

250mm Knauf Insulation RockSilk Rainscreen Slab

HILTI MFT FOX - VT Thermally Broken Bracket fixed to Elemental Cladding Rails with Elemental 4.8 x 16mm Self Drilling Screw

Pro Clima Solitex Wind Tight Membrane wrapped around Window Frame

20mm Elemental GFRG Panel fixed to Elemental Vertical Rail

HILTI Fire Stop Cavity Barrier

Steel Angle fixed to 215mm Concrete Block of Flat and Reynaers Master Link 10 Window Frame

Elemental Horizontal Rail fixed to Steel Angle

Pro Clima Contego Solida Air Tape

300mm Gyproc CasoLine MF Suspended Ceiling System
12.5mm Gyproc FireLine
Fixing points for suspending the metal grid are at 1200mm centres
The ceiling grid to be suspended from concrete using Gyprframe MF12 Soft Cleats and Gyprframe MF8 Strap Hange 2 x 12.5mm Gyproc FireLine

15mm Gyproc Plasterboard fixed to 215mm Block on Flat

Reynaers Master Link 10 Triple Glazed Window
Thermal insulation - Uf 0.99 W/m²K
Thermal insulation - Uw 0.8 W/m²K

Steel Angle fixed to Window and Blockwork

110 x 75mm Eurocell Compactfoam

Pro Clima Contego Solida Air Tape

Ellipsis Aluminium Window Cill

First Floor
11250

20mm Elemental GFRG Panel fixed to Elemental Vertical Rail

HILTI Fire Stop Cavity Barrier

Pro Clima Solitex Wind Tight Membrane wrapped around Window Frame

HILTI MFT FOX - VT Thermally Broken Bracket fixed to Elemental Cladding Rails with Elemental 4.8 x 16mm Self Drilling Screw

215mm Concrete Block on Flat

Porotherm Parge Coat applied to Internal side of Blockwork

15mm Gyproc Plasterboard fixed to Gyproc Gyprframe 92550 °C Studs @600 c/c Metal Studs

250mm Knauf Insulation RockSilk Rainscreen Slab

15mm Timber Window Cill fixed to Brooks Timber Window Board fixed to 215mm Block on Flat.

Porotherm Parge Coat applied to Internal side and top of Blockwork and

Pro Clima Contego Solida Air Tape

Kingspan RMG600 Access/Floor System on 225mm Concrete Cast in Situ Slab

1 D01 - Window Head and Cill
1 : 5



PROJECT

Details

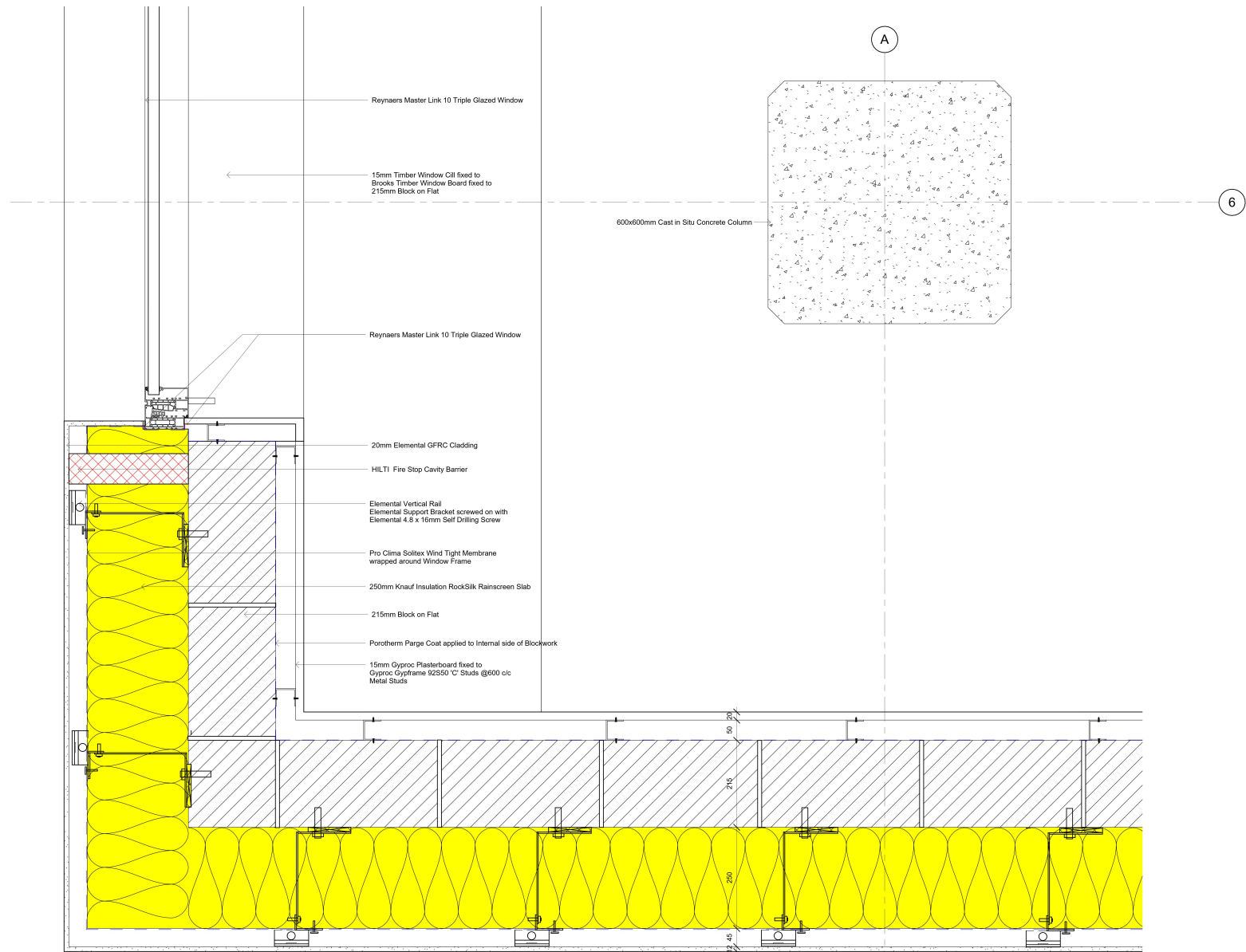
TITLE

D01 - Window Head & Cill


CLIENT

Kaja Sikora

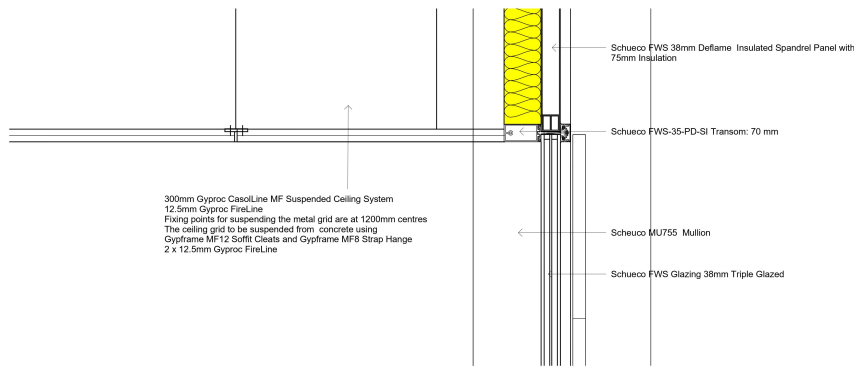
DRAWN BY Kaja Sikora	CHECKED BY DOL	DATE 16/04/23
SCALE (@ A1) 1 : 5	PROJECT NUMBER 2	
DRAWING NUMBER A106	REV	



1 D02 - Window Jamb
1 : 5

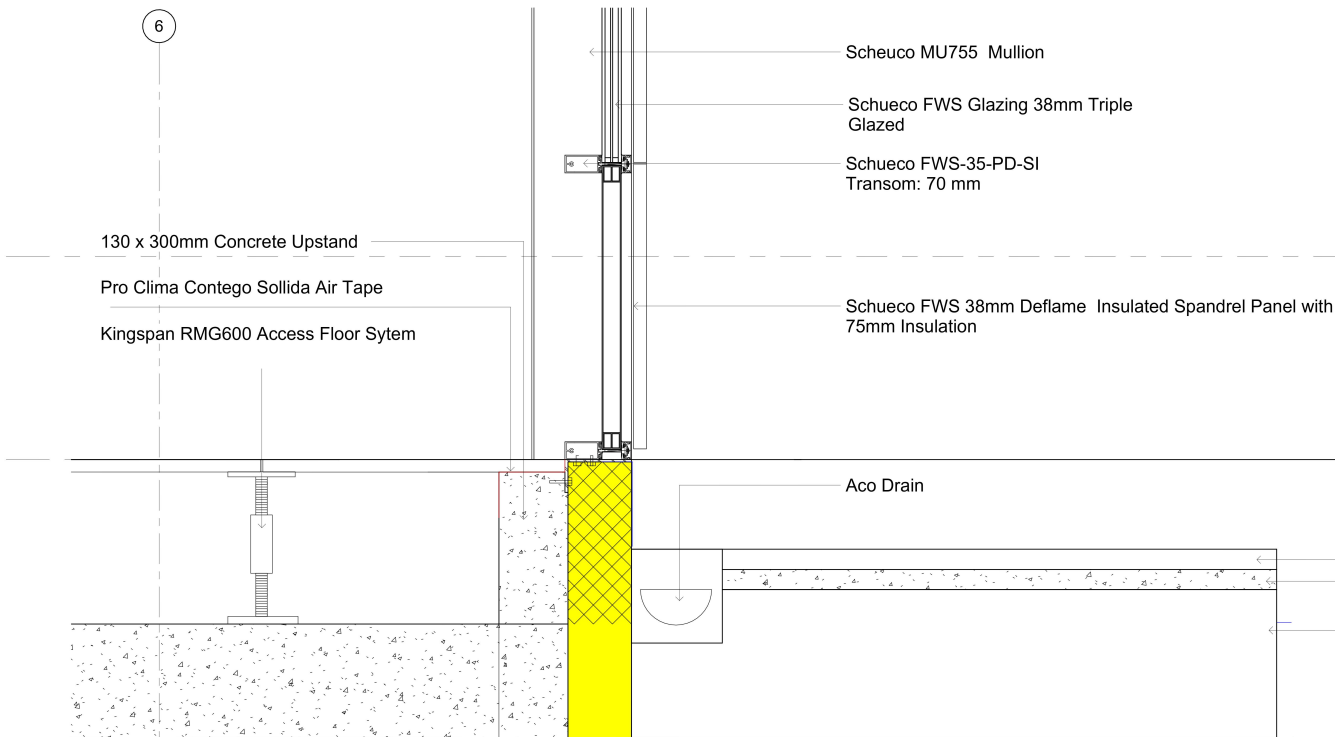
 Ollscoil Technological na Muman Munster Technological University			
PROJECT			
Details			
TITLE			
D02 - Window Jamb			
CLIENT			
Kaja Sikora			
DRAWN BY	CHECKED BY	DATE	
Kaja Sikora	DOL	16/04/23	
SCALE (@ A1)	PROJECT NUMBER		
1 : 5	2		
DRAWING NUMBER			REV
A107			

17/04/2023 01:48:49

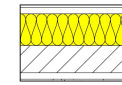


300mm Gyproc CasalLine MF Suspended Ceiling System
12.5mm Gyproc FireLine
Fixing points for suspending the metal grid are at 1200mm centres
The ceiling grid to be suspended from concrete using
Gyproframe MF12 Soffit Cleats and Gyproframe MF8 Strap Hange
2 x 12.5mm Gyproc FireLine

1 D05A - Curtain Wall Head @ GL
1 : 5



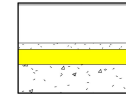
2 D05B - Curtain Wall Base @ GL
1 : 5



External Wall
WLO1
U-Value 0.14w/m2K
20mm Elemental GFRG Panel
50mm Elemental Vertical Rail
Elemental Support Bracket
Screwed on with
Elemental 4.8 x 16mm Self Drilling Screw
250mm Knaf insulation Rockwool Rainscreen Slab
Pro Clima Solitex Wind Tight Membrane
215mm Blockwork
50mm Void
15mm Gyproc Plasterboard fixed to Bracket

Wall Legend

1 : 20



Ground Floor
300mm Kingspan RMG600 Access Floor System
50mm Screed
150mm Xtratherm Thin-R XT Insulation
225mm Cast in Situ Concrete Slab

Floor Legend

1 : 20



Stair Core
WLO3
Fire Resistance 60mins
15mm Gyproc FireLine fixed with
25mm Gyproc Drywall Screws
Gyproframe 92350 'C' Studs @600 c/c

Internal Partition
WLO2

15mm Gyproc Soundbloc fixed with
25mm Gyproc Drywall Screws
Gyproframe 92350 'C' Studs @600 c/c



WLO4
215mm Blockwork

CW01
Sheuco Curtain Wall

CW02
Pikington Curtain Wall

Green Roof Build Up

28mm BauderGREEN XF301 Vegetation
BauderGREEN AL 40 Edge Trim
20mm BauderGREEN SDF Drainage, Filtration and Protection
Layer
BauderKarat Bitumen Roofing Membrane
150mm Kingspan Thermaroof TR27 Roof Board Tapered
Insulation
Visquene VCL
225mm Cast in Situ Concrete Slab

Suspended Ceiling

300mm Gyproc CasalLine MF Suspended Ceiling System
12.5mm Gyproc FireLine
Fixing points for suspending the metal grid are at 1200mm centres
The ceiling grid to be suspended from concrete using
Gyproframe MF12 Soffit Cleats and Gyproframe MF8 Strap Hange
2 x 12.5mm Gyproc FireLine

Glazing

Schueco FWS Glazing 38mm Triple Glazed
Schueco MU755 Mullion
Schueco FWS-35-PD-SI Transom: 70 mm

Spandrel Panel

Schueco FWS 38mm Deflame Insulated Spandrel Panel with
75mm Insulation

Door

Schueco FWS AD UP 75 Outward opening FWS SI Door



PROJECT

Curtain Wall

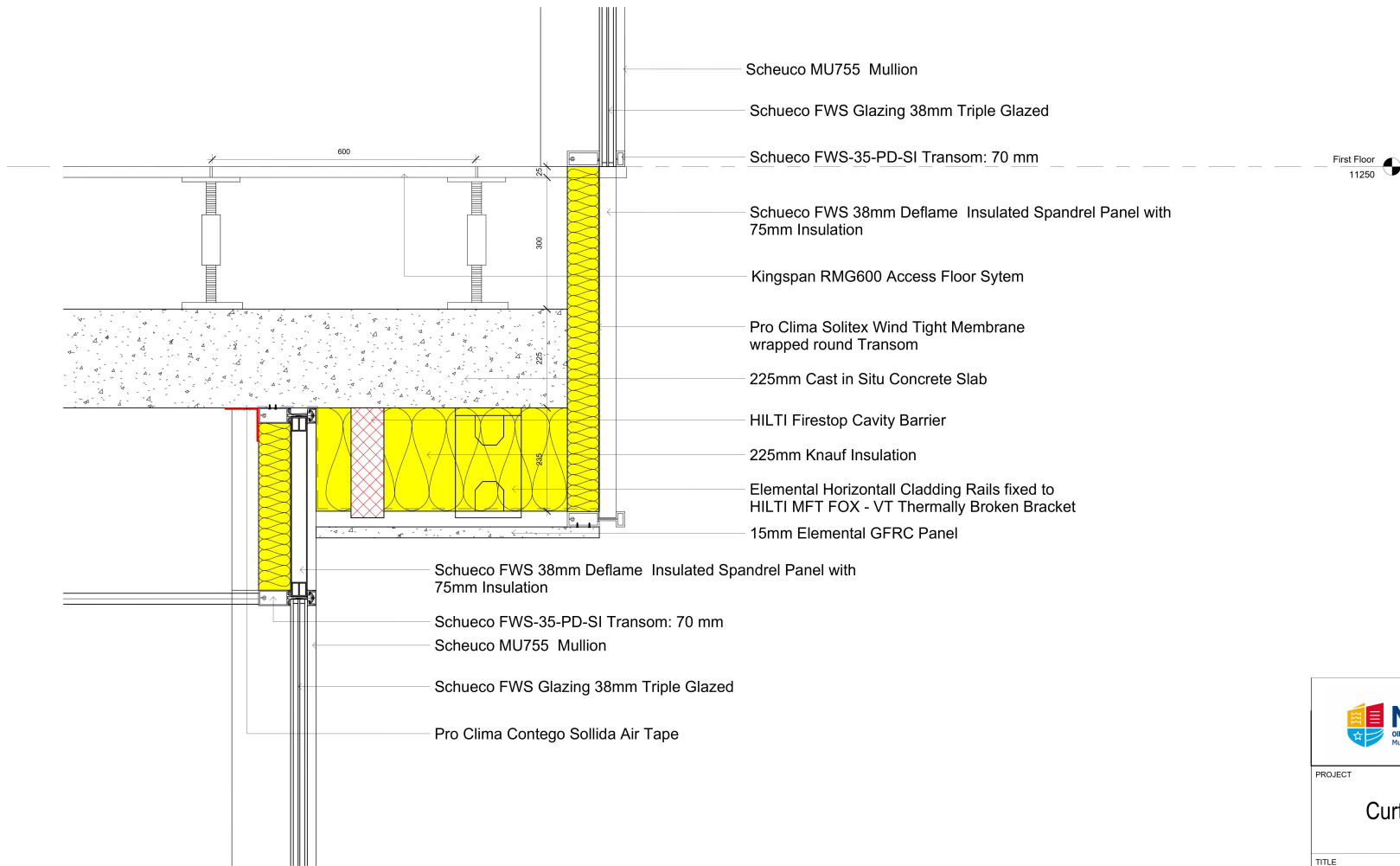
TITLE

D05A&B - CW Base & Head @ Ground Floor

CLIENT

Kaja Sikora

DRAWN BY Kaja Sikora	CHECKED BY DOL	DATE 14/04/23
SCALE (@ A1) As indicated	PROJECT NUMBER 2	DRAWING NUMBER B007
REV		



First Floor
11250

 MTU <small>Ollscoil Technological na Mumhan Munster Technological University</small>		
PROJECT		
Curtain Wall		
TITLE		
D01C - Cill @ Soffit		
CLIENT		
Kaja Sikora		
DRAWN BY	CHECKED BY	DATE
Kaja Sikora	DOL	14/04/23
SCALE (@ A1)	PROJECT NUMBER	
1 : 5	2	
DRAWING NUMBER	REV	
B003		

14/04/2023 10:13:39

Parapet Level
29865

Roof
29250

Bauder Mineral Drain Aggregate

Bauder Insulated Outlet 100mm diameter

28mm BauderGreen XF301
Vegetation

BauderGREEN AL 40 Edge
Trim

20mm BauderGREEN SDF
Drainage, Filtration and
Protection Layer

BauderKarat Polymer bitumen
Roofing Membrane wrapped
around Parapet

150mm Kingspan Thermaroof
TR27 Roof Board Tapered
Insulation

Visqueen VCL

225mm Cast in Situ Concrete Slab

300mm Gyproc CasolLine MF
Suspended Ceiling System
12.5mm Gyproc FireLine
Fixing points for suspending the
metal grid are at 1200mm centres
The ceiling grid to be suspended
from concrete using
Gyframe MF12 Soffit Cleats and
Gyframe MF8 Strap Hange
2 x 12.5mm Gyproc FireLine

Eurocell Compacfoam fixed to Concrete Ring Beam

C and S Roofing Aluminium Parapet
Capping fixed to Ring Beam

15mm Elemental GFRC Panel

250mm Knauf Insulation Rocksilk Rainscreen Slab

Elemental Vertical Cladding Rails fixed to
HILTI MFT FOX - VT Thermally Broken Bracket

Pro Clima Solitex Wind Tight Membrane wrapped round
Transom and Copping

HILTI Ventilated FireStop
Cavity Barrier

Elemental Horizontal Rail Fixed to Cladding

Schueco FWS 38mm Deflame
Insulated Spandrel Panel with
75mm Insulation

Schueco FWS-35-PD-SI Transom: 70 mm

MU755 Scheuco Mullion

Schueco FWS Glazing 38mm Triple Glazed

1 D07 - Green Roof
1:5



PROJECT

Curtain Wall

TITLE

D07 -Green Roof

CLIENT

Kaja Sikora

DRAWN BY Kaja Sikora	CHECKED BY DOL	DATE 14/04/23
SCALE (@ A1) 1:5	PROJECT NUMBER 2	
DRAWING NUMBER B009	REV	

15/04/2023 09:28:07

6

1110

Fifth Floor
25650

Blucher 110mm diameter Stainless Steel Roof Drain
280mm x 280mm Flange

600mm x 600mm x 25mm
Roadstone Stone Paving Panels

Caro System Adjustable
Pedestal 150mm

BauderKarat Polymer bitumen
Roofing Membrane wrapped
around Parapet

150mm Kingspan Thermaroof
TR27 Roof Board Tapered
Insulation

Visqueen VCL
225mm Cast in Situ Concrete Slab

300mm Gyproc CasoLine MF
Suspended Ceiling System
12.5mm Gyproc FireLine
Fixing points for suspending the
metal grid are at 1200mm centres
The ceiling grid to be suspended
from concrete using
Gypframe MF12 Soffit Cleats and
Gypframe MF8 Strap Hange
2 x 12.5mm Gyproc FireLine

1 D01A - CW Head @ Parapet
1 : 5

22mm Toughened Laminated Clear Glass fixed to
215mm x 200mm Concrete Ring Beam fixed to
Mild Steel Galvanised Brackets @600c/c

Eurocell Compacfoam fixed to Concrete Ring Beam

C and S Roofing Aluminium Parapet
Capping fixed to Ring Beam

15mm Elemental GFRC Panel

250mm Knauf Insulation Rocksilk Rainscreen Slab

Elemental Vertical Cladding Rails fixed to
HILTI MFT FOX - VT Thermally Broken Bracket

Pro Clima Solitex Wind Tight Membrane wrapped round
Transom and Copping

HILTI Ventilated FireStop
Cavity Barrier


Elemental Horizontal Rail Fixed to Cladding

Schueco FWS 38mm Deflame
Insulated Spandrel Panel with
75mm Insulation

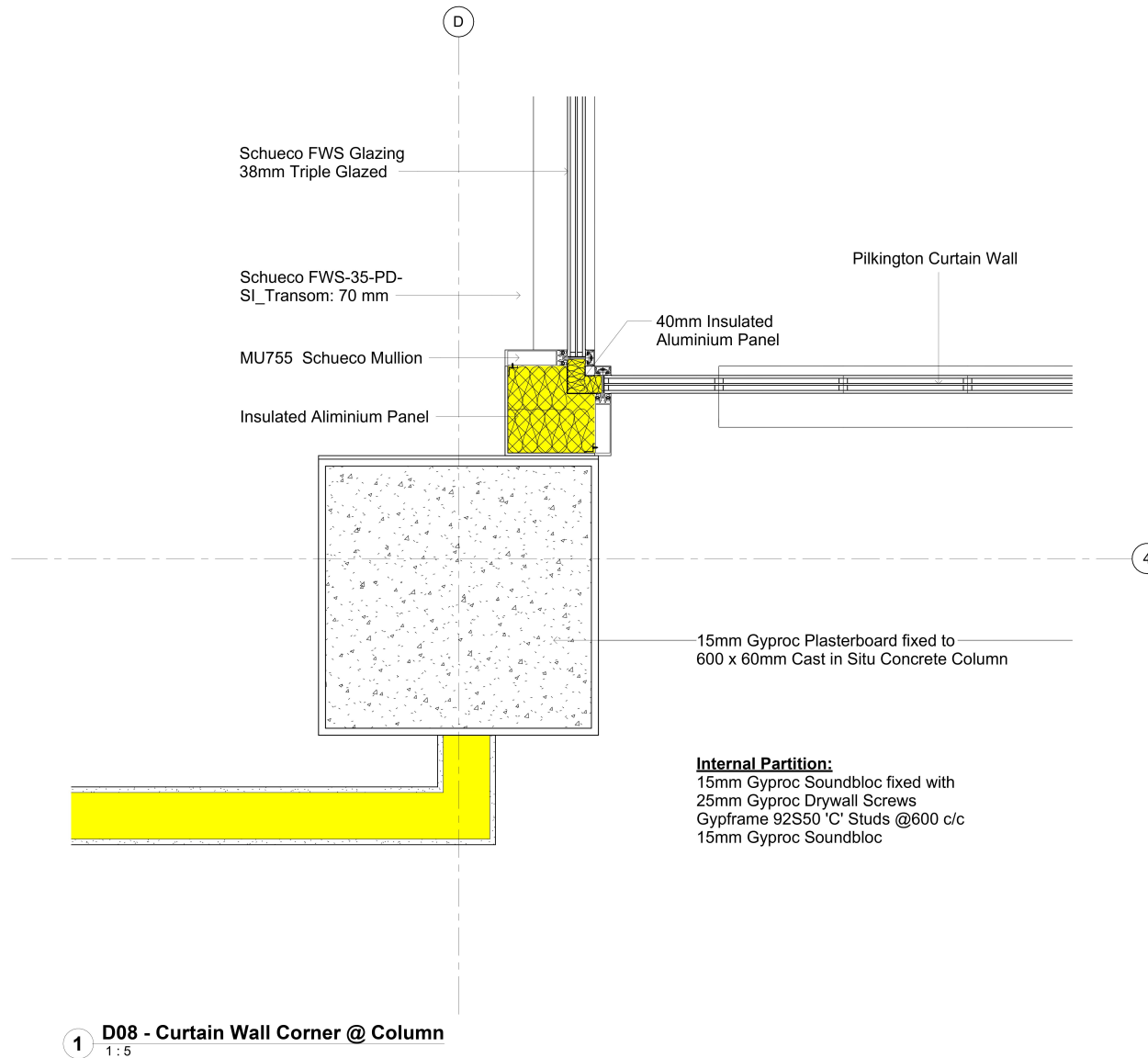
Schueco FWS-35-PD-SI Transom: 70 mm


Scheuco MU755 Mullion

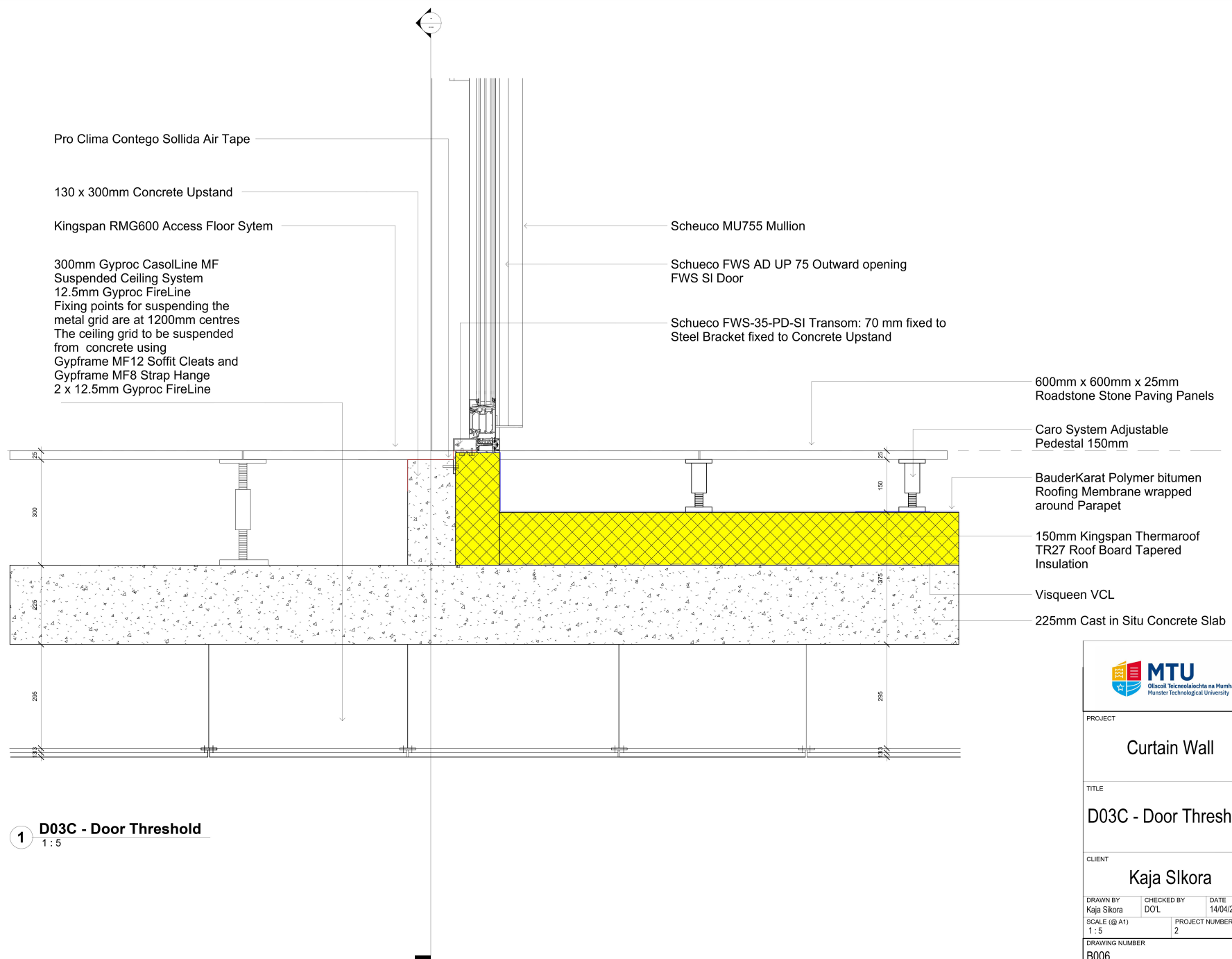
Schueco FWS Glazing 38mm Triple Glazed

 <p>MTU Ollscoil Techniceolaíochta na Mumhan Munster Technological University</p>			
PROJECT			
Curtain Wall			
TITLE			
D01A - Curtain Wall Head @ Parapet			
CLIENT			
Kaja Sikora			
DRAWN BY	CHECKED BY	DATE	
Kaja Sikora	DOL	14/04/23	
SCALE (@ A1)	PROJECT NUMBER		
1 : 5	2		
DRAWING NUMBER			REV
B001			

14/04/2023 00:20:58



 Ollscoil Technological na Míúhan Munster Technological University			
PROJECT			
Details			
TITLE			
D08 - Plan at Curtain Wall Corner			
CLIENT			
Kaja Sikora			
DRAWN BY	CHECKED BY	DATE	
Kaja Sikora	DOL	17/04/2023	
SCALE (@ A1)	PROJECT NUMBER		REV
1:5	2		
DRAWING NUMBER			REV
A113			



Pro Clima Contego Sollida Air Tape

130 x 300mm Concrete Upstand

Kingspan RMG600 Access Floor Sytem

300mm Gyproc CasolLine MF
Suspended Ceiling System
12.5mm Gyproc FireLine
Fixing points for suspending the
metal grid are at 1200mm centres
The ceiling grid to be suspended
from concrete using
Gypframe MF12 Soffit Cleats and
Gypframe MF8 Strap Hange
2 x 12.5mm Gyproc FireLine

Scheuco MU755 Mullion

Schueco FWS AD UP 75 Outward opening
FWS SI Door

Schueco FWS-35-PD-SI Transom: 70 mm fixed to
Steel Bracket fixed to Concrete Upstand

600mm x 600mm x 25mm
Roadstone Stone Paving Panels

Caro System Adjustable
Pedestal 150mm

BauderKarat Polymer bitumen
Roofing Membrane wrapped
around Parapet


150mm Kingspan Thermaroof
TR27 Roof Board Tapered
Insulation

Visqueen VCL

225mm Cast in Situ Concrete Slab

Fifth Floor
25650

1 D03C - Door Threshold
1 : 5

 <p>MTU Ollscoil Technicalabachta na Mumhan Munster Technological University</p>			
PROJECT			
Curtain Wall			
TITLE			
D03C - Door Threshold			
CLIENT			
Kaja Sikora			
DRAWN BY	CHECKED BY	DATE	
Kaja Sikora	DOL	14/04/23	
SCALE (@ A1)	PROJECT NUMBER		
1 : 5	2		
DRAWING NUMBER			REV
B006			

14/04/2023 00:39:58

