

1 Partial Section 4th Floor
1 : 20

2 Partial Section CLT 5th Floor
1 : 20

Top of Parapet
20.393

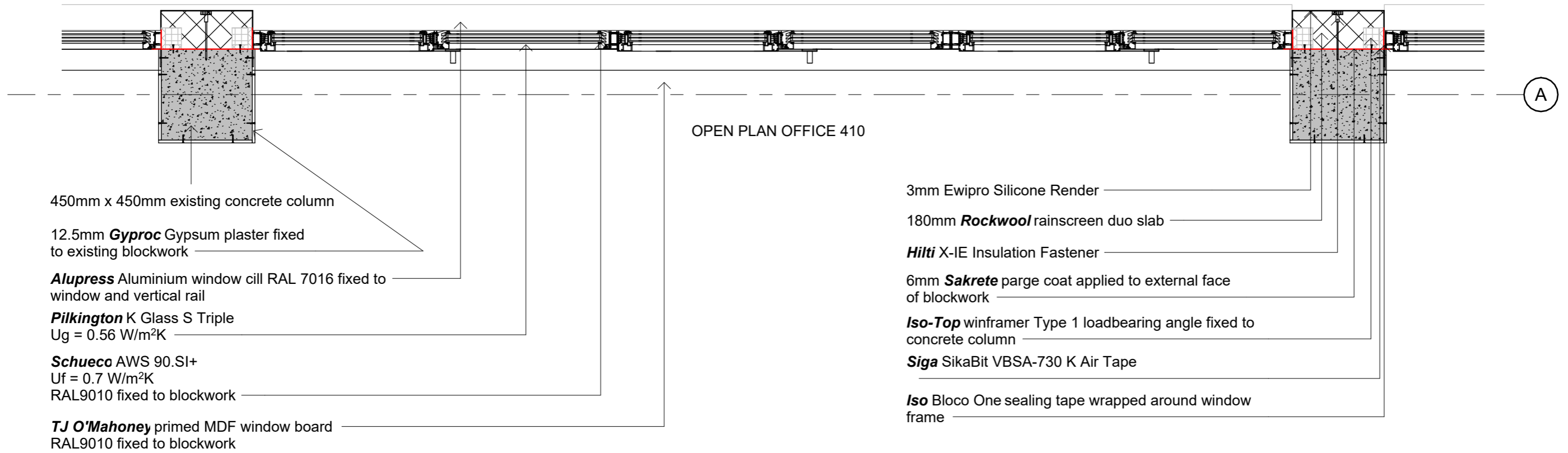
Fifth Floor
19.920

Fourth Floor
16.463

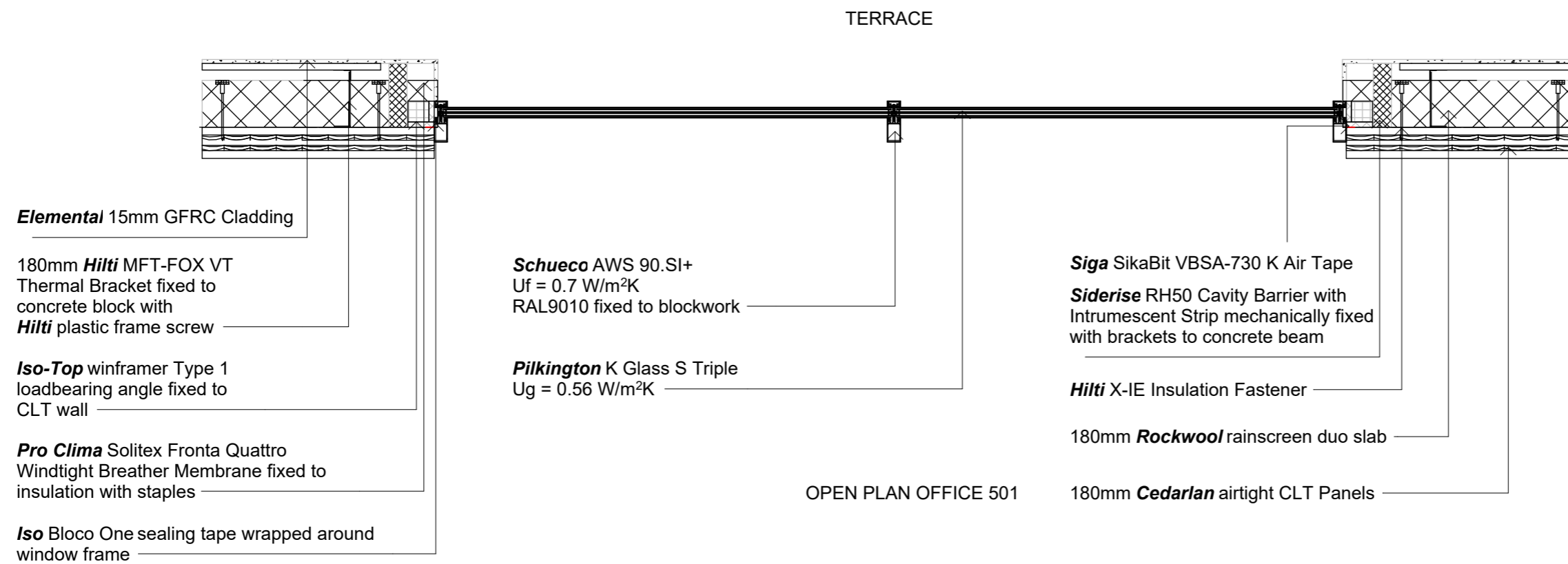
Proposed Parapet
23.500

Extension Roof
22.857

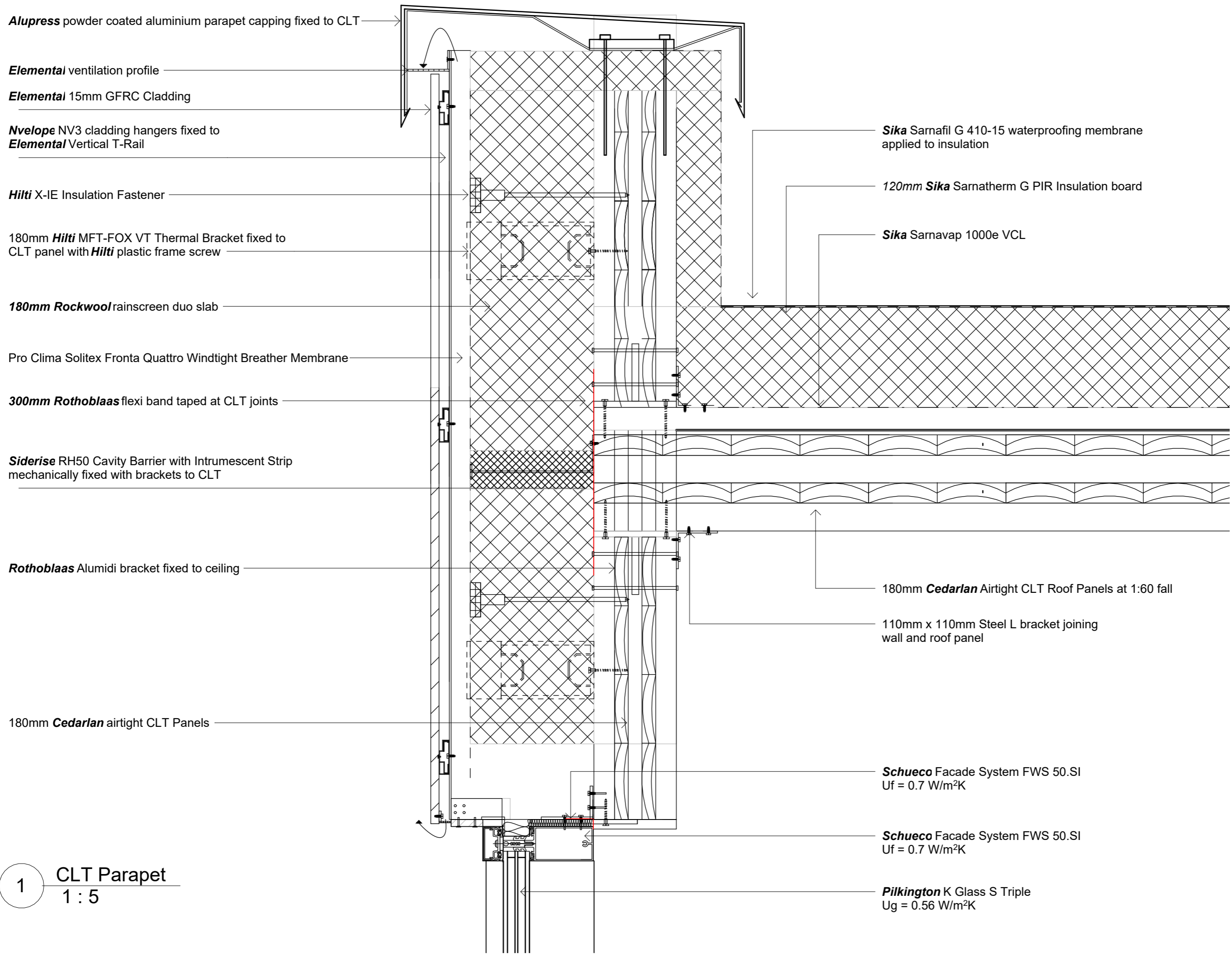
- 25mm thick toughened laminated clear glass balustrade
- OnLevel** 6500 Top Mount Parapet Wall Profile - Anodised Aluminium
- Alupress** powder coated aluminium parapet capping RAL7016 fixed to blockwork and CLT
- Elemental** 15mm GFRC Cladding
- Pro Clima** Solitex Fronta Quattro Windtight Breather Membrane
- 180mm **Hilti** MFT-FOX VT Thermal Bracket fixed to CLT panel with **Hilti** plastic frame screw
- Nvelope** NV3 cladding hangers fixed to **Elemental** Vertical T-Rail
- 180mm **Rockwool** rainscreen duo slab
- 215mm existing block on flat
- 300mm Rothoblaas** flexi band taped at CLT joints
- Siderise** RH50 Cavity Barrier with Intrumescent Strip mechanically fixed with brackets to CLT
- Hilti** X-IE Insulation Fastener
- Elemental** ventilation profile
- Iso-Top** winframer Type 1 loadbearing angle fixed to concrete beam/CLT
- Iso** Bloco One sealing tape wrapped around window frame
- Siga** SikaBit VBSA-730 K Air Tape
- 20mm x 600mm x 600mm **Milano** Grey Virtue Porcelain Paving Slab
- 150mm **Caro** Pedestals
- Sika** Sarnafil G 410-15 waterproofing membrane applied to insulation
- 120mm **Sika** Sarnatherm G PIR Insulation board
- Sika** Sarnavap 1000e VCL
- 150mm Airtight concrete screed poured over existing slab @1:60 fall
- 180mm **Cedarlan** Airtight CLT Roof Panels at 1:60 fall
- ACO HP vertical spigot outlet - Dome grate water outlet adhesively fixed over waterproof membrane
- 450mm x 680mm existing concrete beam
- Pilkington** K Glass S Triple
U_g = 0.56 W/m²K
- Schueco** AWS 90.SI+
U_f = 0.7 W/m²K
RAL9010 fixed to blockwork
- Schueco** Facade System FWS 50.SI
U_f = 0.7 W/m²K
- TJ O'Mahoney** primed MDF window board
RAL9010 fixed to blockwork
- 12.5mm **Gyproc** Gypsum plasterboard fixed to existing blockwork
- 6mm **Sakrete** parge coat applied to external face of blockwork
- Alupress** Aluminium window cill RAL 7016 fixed to window and vertical rail
- Compacfoam** CF200
- Kingspan** RMG600 Access Floor System on **Kingspan** Alpha 3 pedestals
Concrete Upstand
- 180mm existing concrete slab
- 300mm **Gyproc** CasoLine MF Suspended Ceiling System
12.5mm **Gyproc** FireLine



1 4th Floor Partial Plan
1 : 20



2 5th Floor Partial Plan
1 : 20



1 CLT Parapet
1 : 5

Elemental 15mm GFRC Cladding

180mm **Hilti** MFT-FOX VT Thermal Bracket fixed to CLT panel with **Hilti** plastic frame screw

Hilti X-IE Insulation Fastener

Nvelope NV3 cladding hangers fixed to **Elemental** Vertical T-Rail

Pro Clima Solitex Fronta Quattro Windtight Breather Membrane

Elemental ventilation profile

180mm **Rockwool** rainscreen duo slab

Siga SikaBit VBSA-730 K Air Tape

180mm **Cedarlan** airtight CLT Panels

Pilkington K Glass S Triple
 $U_g = 0.56 \text{ W/m}^2\text{K}$

Schueco AD UP 90 outward opening door RAL7016
 $U_f = 1.3 \text{ W/m}^2\text{K}$ fixed to concrete upstand and screed

20mm x 600mm x 600mm **Milano** Grey Virtue Porcelain Paving Slab

150mm **Caro** Pedestals

Compacfoam CF200

Siga SikaBit VBSA-730 K Air Tape

Sika Sarnafil G 410-15 waterproofing membrane applied to insulation

120mm **Sika** Sarnatherm G PIR Insulation board

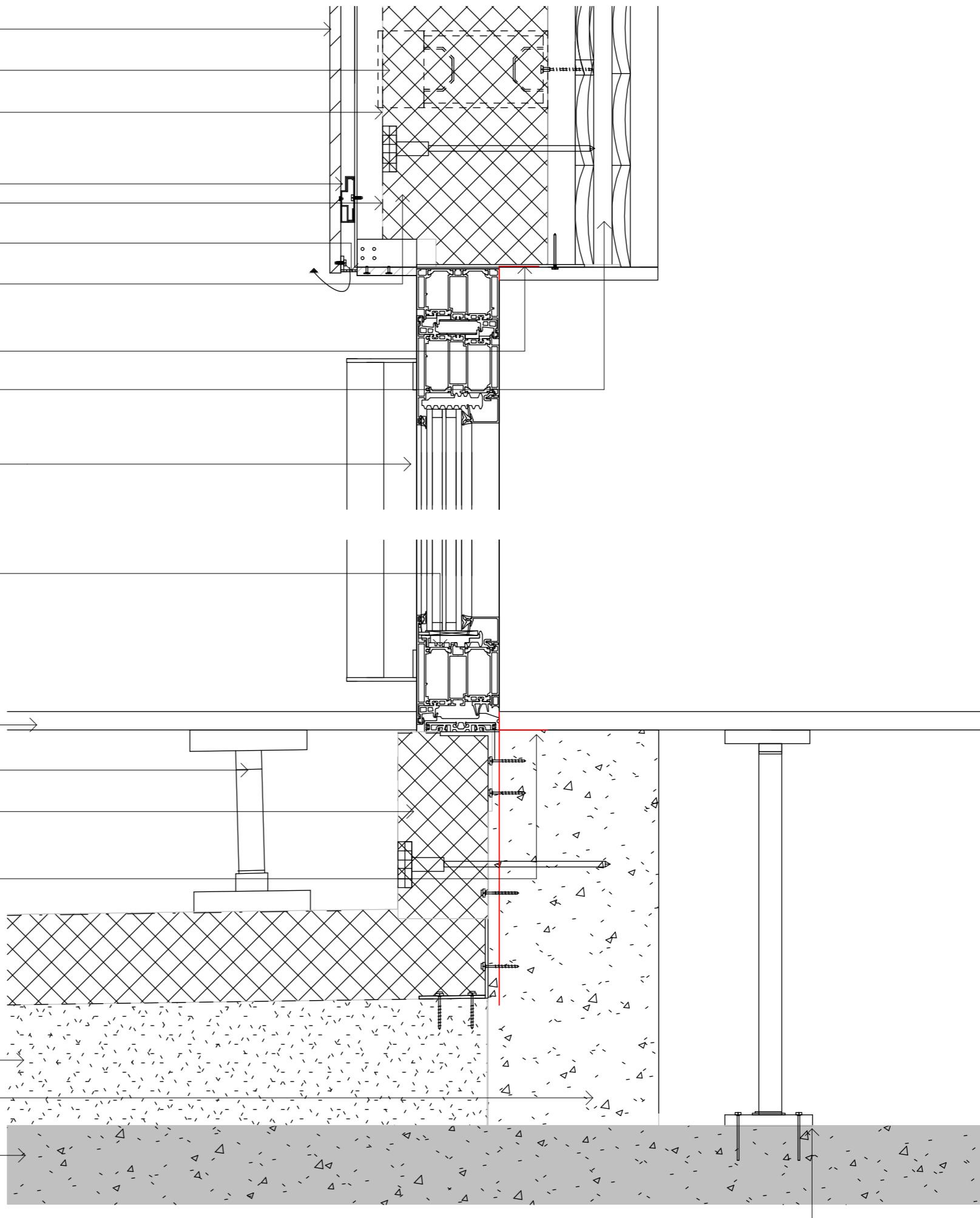
Sika Sarnavap 1000e VCL

150mm Airtight concrete screed poured over existing slab @1:60 fall

Concrete Upstand

180mm existing concrete slab

Kingspan RMG600 Access Floor System on **Kingspan** Alpha 3 pedestals



Elemental 15mm GFRC Cladding

Pro Clima Solitex Fronta Quattro
Windtight Breather Membrane fixed to
insulation with staples

180mm **Hilti** MFT-FOX VT Thermal Bracket fixed to
concrete block with **Hilti** plastic frame screw

Nvelope NV3 cladding hangers fixed to
Elemental Vertical T-Rail

180mm **Rockwool** rainscreen duo slab

Iso-Top winframer Type 1 loadbearing angle fixed to
concrete beam

Iso Bloco One sealing tape wrapped around window
frame

Elemental ventilation profile fixed to cladding

Siga SikaBit VBSA-730 K Air Tape

Pilkington K Glass S Triple
 $U_g = 0.56 \text{ W/m}^2\text{K}$

Schueco AWS 90.SI+
 $U_f = 0.7 \text{ W/m}^2\text{K}$
RAL9010 fixed to blockwork

Alupress Aluminium window cill RAL 7016 fixed to
window and vertical rail

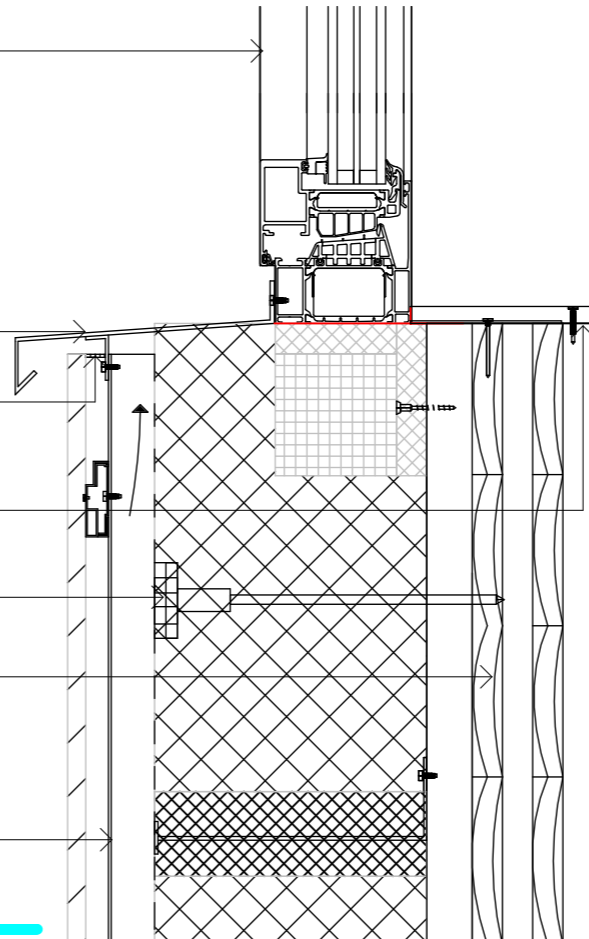
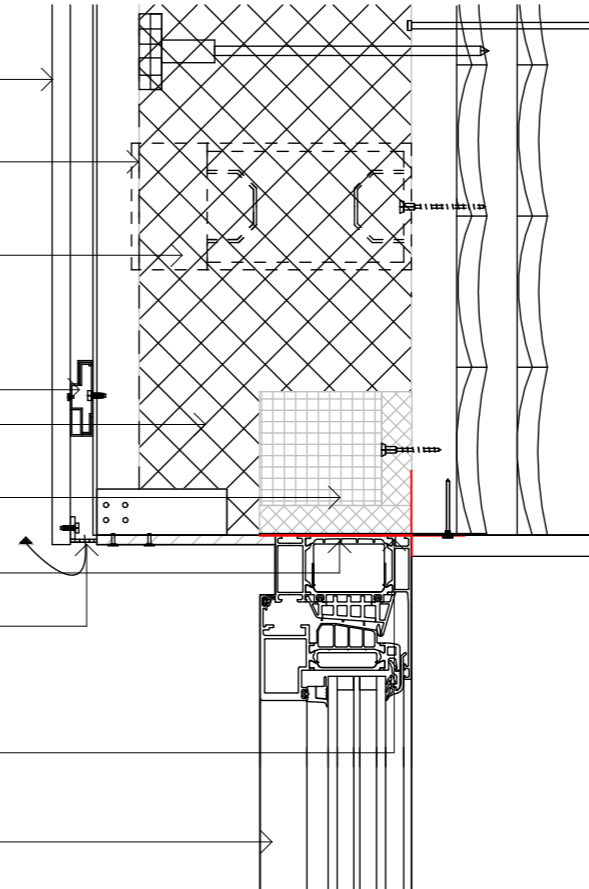
Goss Flyscreens Mesh

TJ O'Mahoney primed MDF window board
RAL9010 fixed to blockwork

Hilti X-IE Insulation Fastener

180mm **Cedarlan** airtight CLT Panels

Siderise RH50 Cavity Barrier with
Intrumescent Strip mechanically fixed with
brackets to concrete beam



Elemental 15mm GFRC Cladding

180mm **Hilti** MFT-FOX VT Thermal Bracket fixed to CLT panel with **Hilti** plastic frame screw

Pro Clima Solitex Fronta Quattro Windtight Breather Membrane

Nvelope NV3 cladding hangers fixed to **Elemental** Vertical T-Rail

Siderise RH50 Cavity Barrier with Intrumescent Strip mechanically fixed with brackets to CLT

Elemental ventilation profile

180mm **Rockwool** rainscreen duo slab

180mm **Cedarlan** airtight CLT Panels

Siga SikaBit VBSA-730 K Air Tape

Pilkington K Glass S Triple
Ug = 0.56 W/m²K

Schueco Facade System FWS 50.SI
Uf = 0.7 W/m²K

Siga SikaBit VBSA-730 K Air Tape

20mm x 600mm x 600mm **Milano** Grey Virtue Porcelain Paving Slab

150mm **Caro** Pedestals

Compacfoam CF200

Hilti X-IE Insulation Fastener

Sika Sarnafil G 410-15 waterproofing membrane applied to insulation

120mm **Sika** Sarnatherm G PIR Insulation board

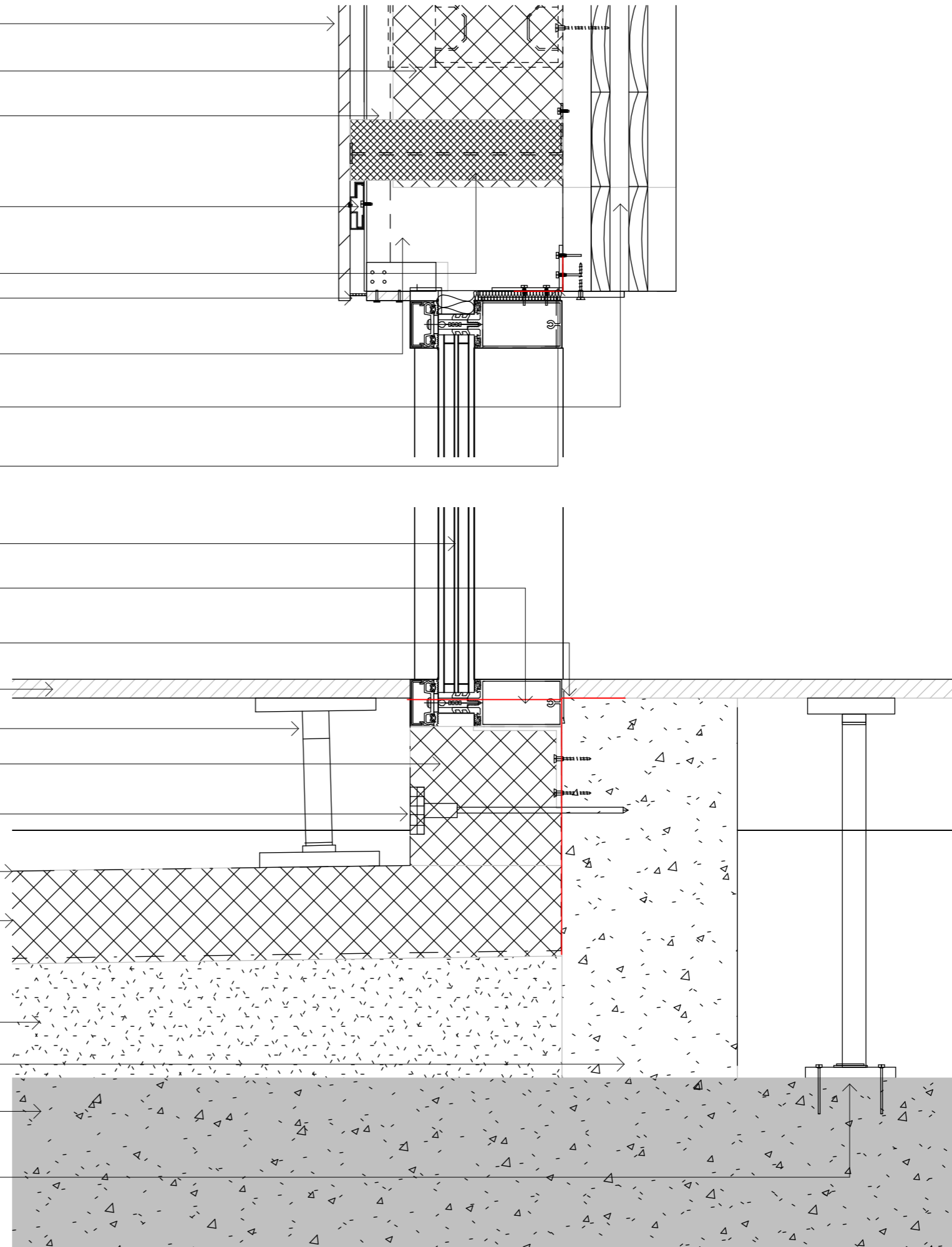
Sika Sarnavap 1000e VCL

50mm Airtight concrete screed poured over existing slab @1:60 fall

Concrete Upstand

180mm existing concrete slab

Kingspan RMG600 Access Floor System on **Kingspan** Alpha 3 pedestals



Elemental 15mm GFRC Cladding

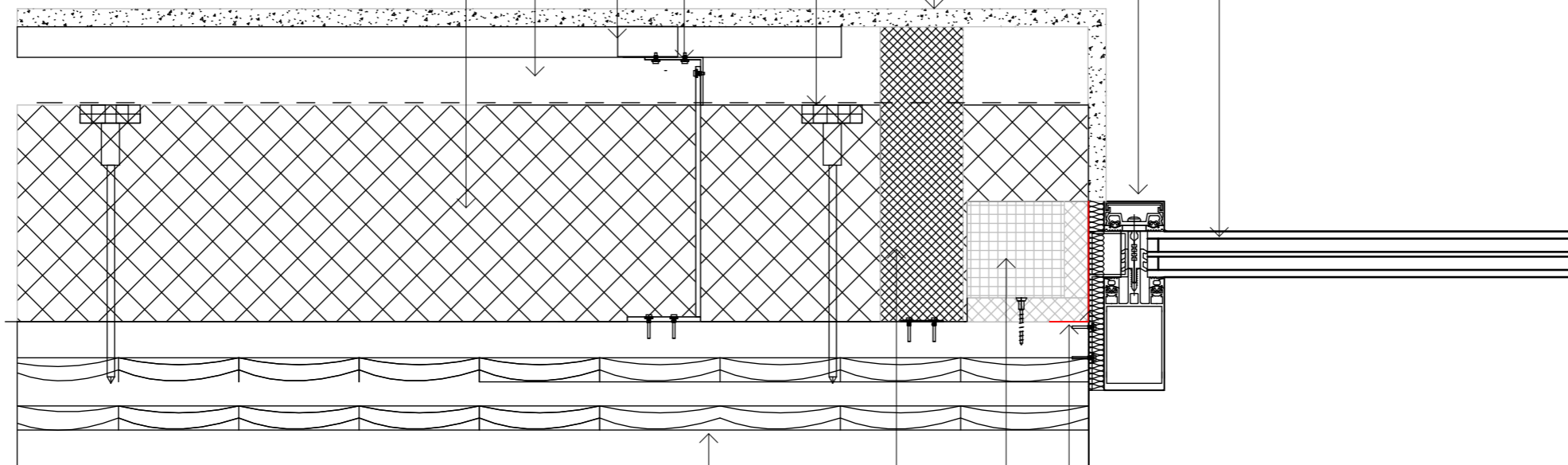
Hilti X-IE Insulation Fastener

180mm **Hilti** MFT-FOX VT Thermal Bracket fixed to CLT with **Hilti** plastic frame screw

Nvelope NV3 cladding hangers fixed to **Elemental** Vertical T-Rail

Pro Clima Solitex Fronta Quattro Windtight Breather Membrane fixed to insulation with staples

180mm **Rockwool** rainscreen duo slab



Schueco Facade System FWS 50.SI
Uf = 0.7 W/m²K

Pilkington K Glass S Triple
Ug = 0.56 W/m²K

180mm **Cedarlan** airtight CLT Panels

Siderise RH50 Cavity Barrier with Intrumescent Strip mechanically fixed with brackets to concrete beam

Iso-Top winframer Type 1 loadbearing angle fixed to concrete beam

Siga SikaBit VBSA-730 K Air Tape

Iso Bloco One sealing tape wrapped around window frame

25mm thick toughened laminated clear glass balustrade

OnLevel 6500 Top Mount Parapet Wall Profile - Anodised Aluminium

Alupress powder coated aluminium parapet capping RAL7016 fixed to blockwork

Elemental ventilation profile

Elemental 15mm GFRC Cladding

Nvelope NV3 cladding hangers fixed to **Elemental** Vertical T-Rail

Pro Clima Solitex Fronta Quattro Windtight Breather Membrane

180mm **Hilti** MFT-FOX VT Thermal Bracket fixed to CLT panel with **Hilti** plastic frame screw

180mm **Rockwool** rainscreen duo slab

Hilti X-IE Insulation Fastener

6mm **Sakrete** parge coat applied to external face of blockwork

215mm existing block on flat

150mm **Caro** Pedestals

Sika Sarnafil G 410-15 waterproofing membrane applied to insulation

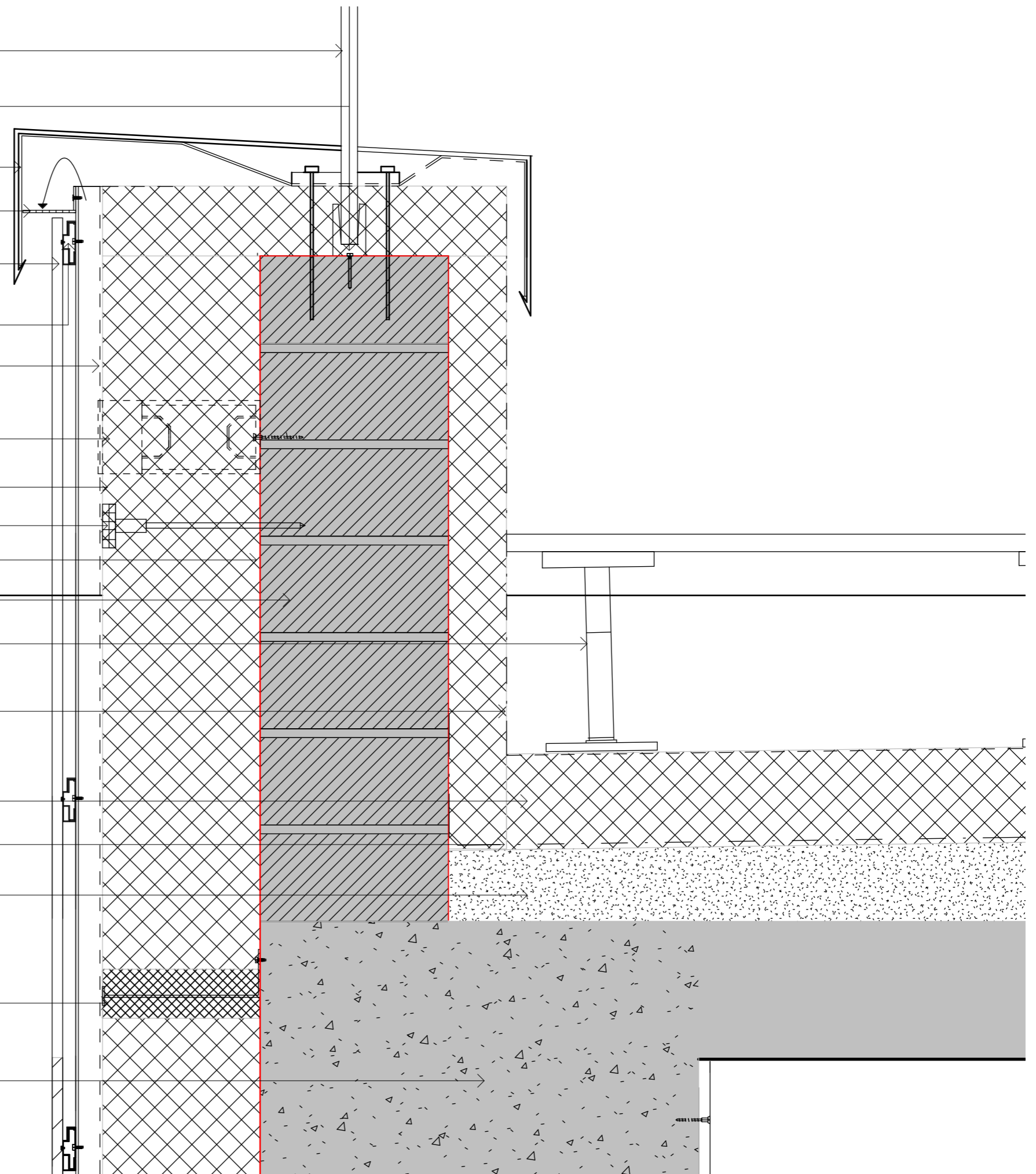
120mm **Sika** Sarnatherm G PIR Insulation board

Sika Sarnavap 1000e VCL

150mm Airtight concrete screed poured over existing slab @1:60 fall

Siderise RH50 Cavity Barrier with Intrumescent Strip mechanically fixed with brackets to concrete beam

450mm x 680mm existing concrete beam



Elemental 15mm GFRC Cladding

Nvelope NV3 cladding hangers fixed to
Elemental Vertical T-Rail

180mm **Hilti** MFT-FOX VT Thermal Bracket fixed to
concrete block with **Hilti** plastic frame screw

Hilti X-IE Insulation Fastener

Pro Clima Solitex Fronta Quattro
Windtight Breather Membrane fixed to
insulation with staples

180mm **Rockwool** rainscreen duo slab

Elemental ventilation profile fixed to cladding

Iso-Top winframer Type 1 loadbearing angle fixed to
concrete beam

Iso Bloco One sealing tape wrapped around window
frame

Siga SikaBit VBSA-730 K Air Tape

450mm x 680mm existing concrete beam

12.5mm **Gyproc** Gypsum Plasterboard fixed to
concrete beam

300mm **Gyproc** CasolLine MF Suspended Ceiling System
12.5mm **Gyproc** FireLine

Pilkington K Glass S Triple
 $U_g = 0.56 \text{ W/m}^2\text{K}$

Schueco AWS 90.SI+
 $U_f = 0.7 \text{ W/m}^2\text{K}$
RAL9010 fixed to blockwork

Alupress Aluminium window cill RAL 7016 fixed to
window and vertical rail

Goss Flyscreens Mesh

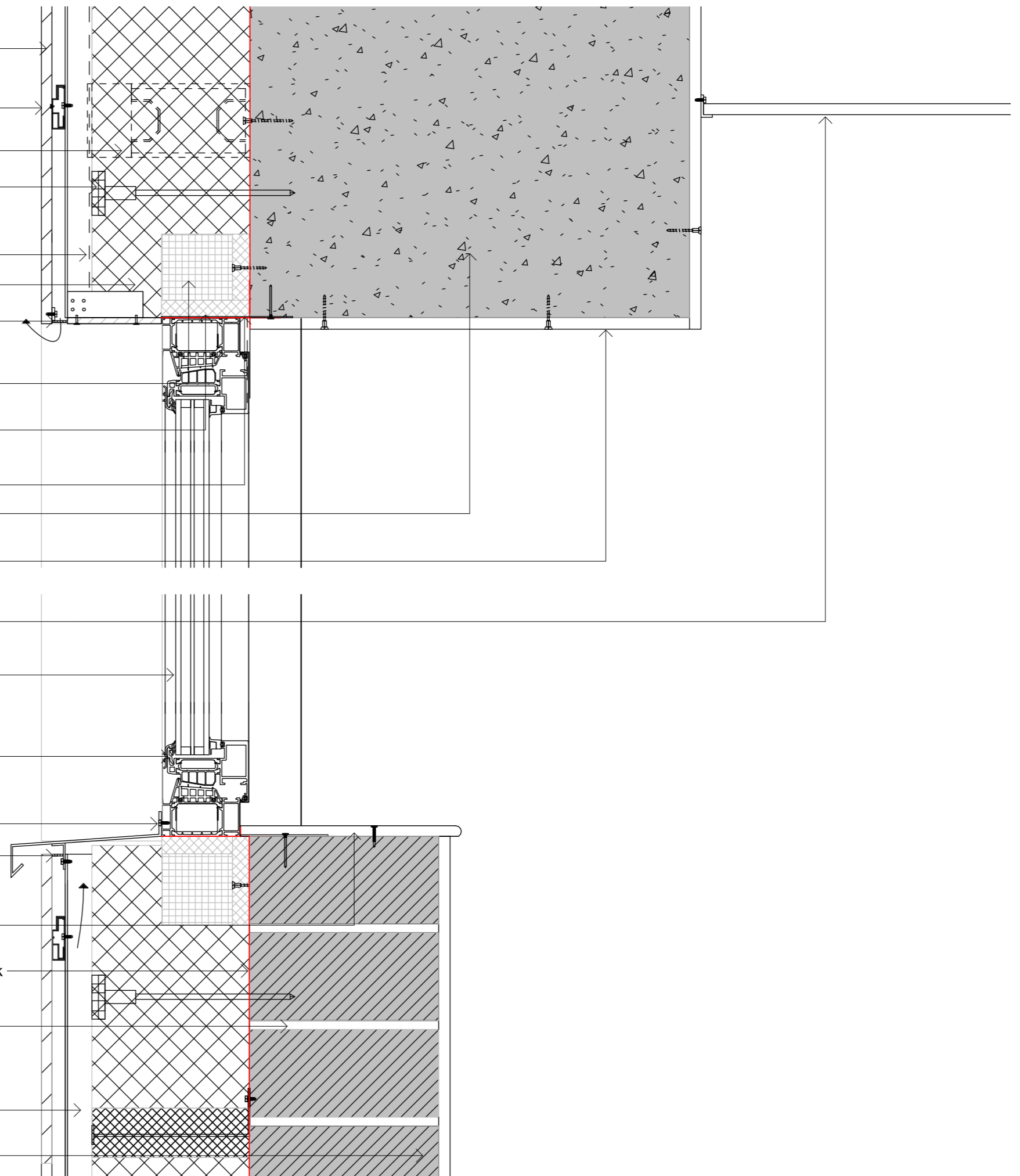
TJ O'Mahoney primed MDF window board
RAL9010 fixed to blockwork

6mm **Sakrete** parge coat applied to external face of blockwork

215mm existing block on flat

Siderise RH50 Cavity Barrier with
Intrumescent Strip mechanically fixed with
brackets to concrete beam

12.5mm **Gyproc** Gypsum plaster fixed
to existing blockwork



1

Window Head and Cill
1 : 5

A

Elemental 15mm GFRC Cladding

Nvelope NV3 cladding hangers fixed to **Elemental** Vertical T-Rail

Hilti X-IE Insulation Fastener

180mm **Hilti** MFT-FOX VT Thermal Bracket fixed to concrete block with **Hilti** plastic frame screw

180mm **Rockwool** rainscreen duo slab

6mm **Sakrete** parge coat applied to external face of blockwork

215mm existing block on flat

12.5mm **Gyproc** Gypsum plaster fixed to existing blockwork

160mm existing concrete slab

Siderise RH50 Cavity Barrier with Intrumescent Strip mechanically fixed with brackets to concrete beam

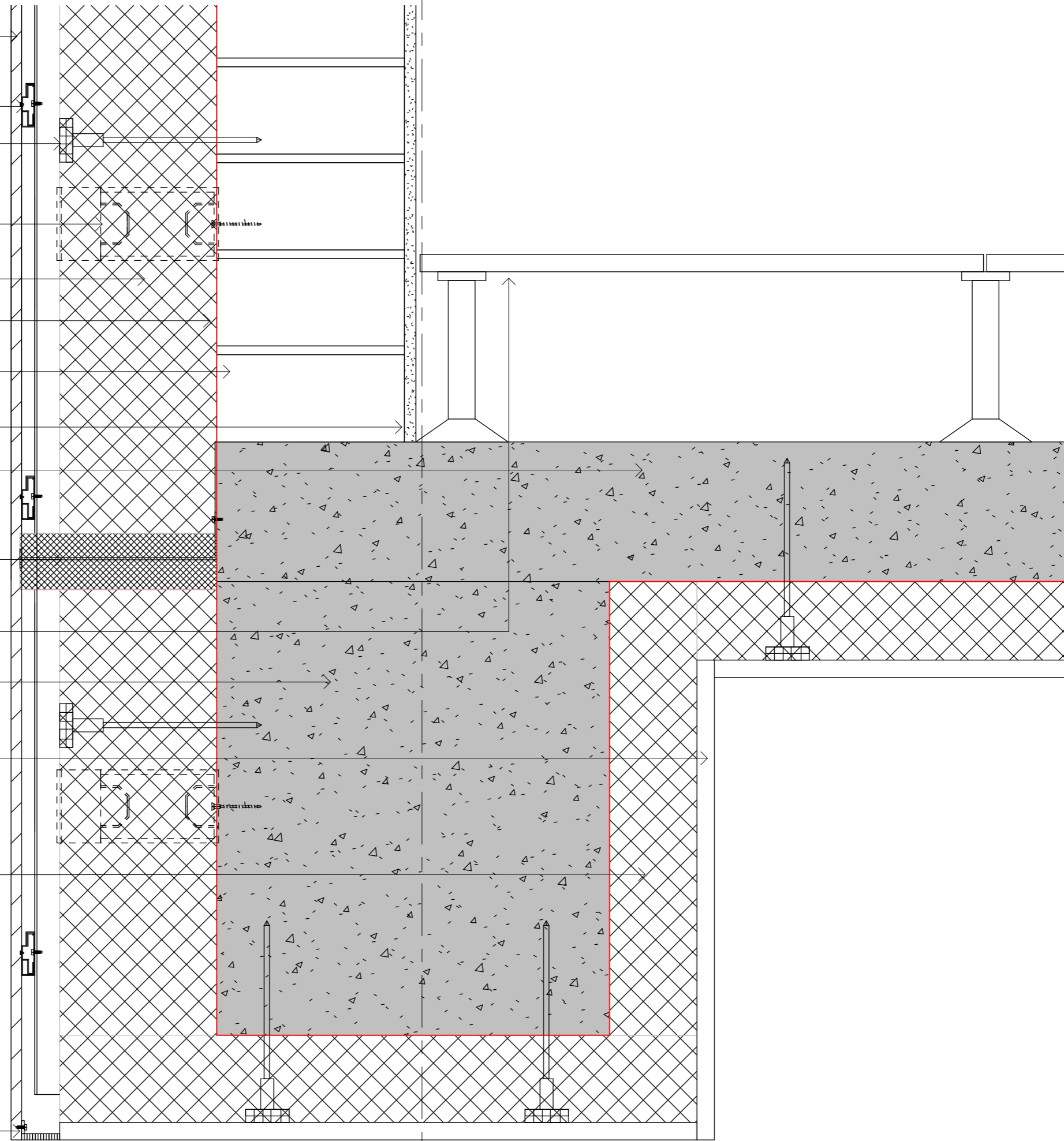
Kingspan RHG600 Simploc 600mmx600mm Access Flooring System

450mm x 680mm existing concrete beam

18mm **Knauf** Rockwool soffit linerboard fixed to insulation

100mm **Knauf Rockwool** insulation fixed to concrete slab using **Hilti** X-IE insulation fasteners

Elemental ventilation profile fixed to cladding



CARPARK

STAIR 1 002

Pilkington K Glass S Triple
Ug = 0.56 W/m²K

Schueco AD UP 90 outward opening door RAL7016
Uf = 1.3 W/m²K fixed to compact foam

80mm x 350mm **Compacfoam** block mechanically fixed to concrete slab

Aco 90mm x 110mm linear channel
drain

30mm Asphalt Carparl

90mm Sand Binding

Hardcore

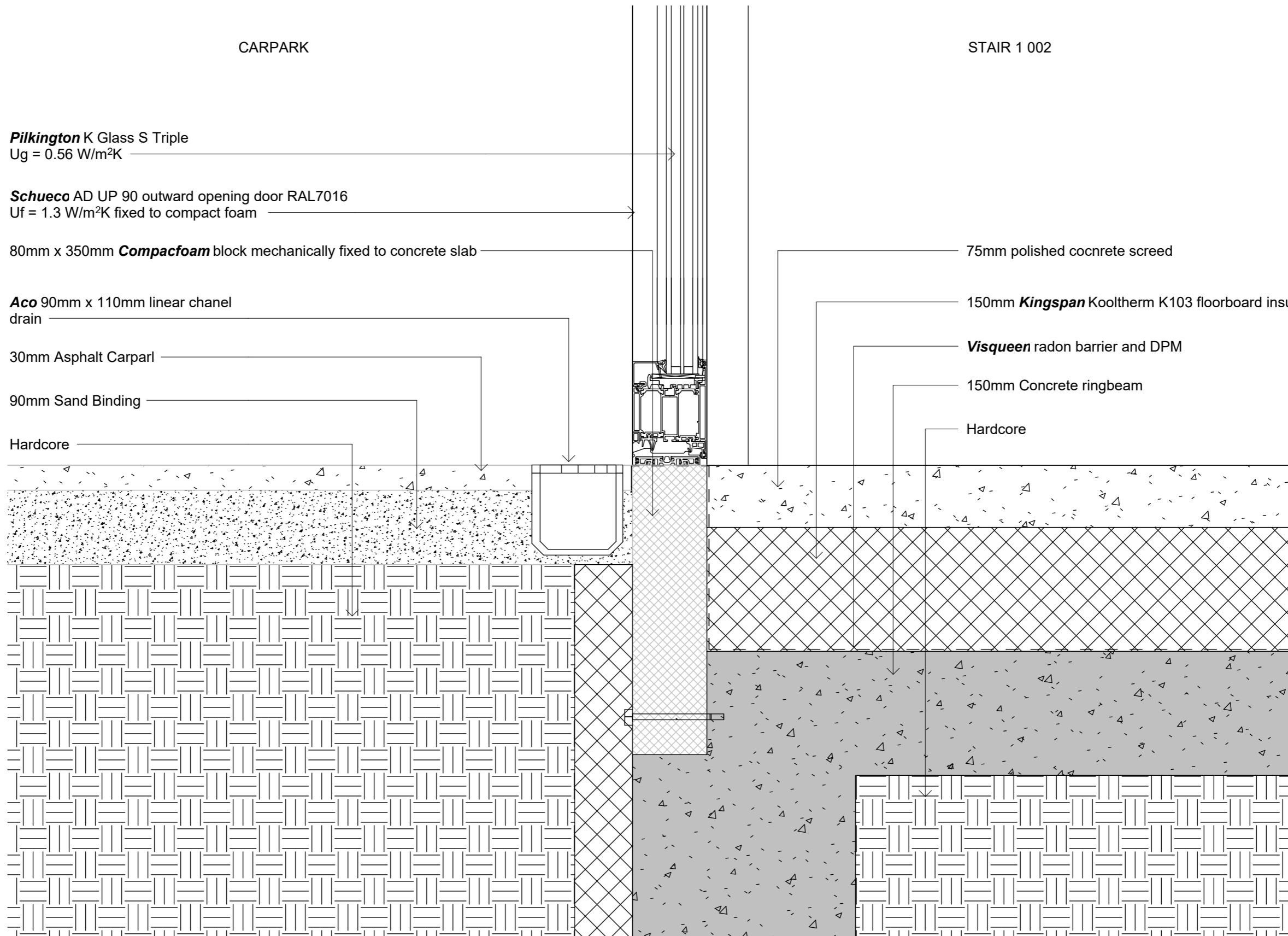
75mm polished concrete screed

150mm **Kingspan** Kooltherm K103 floorboard insulation

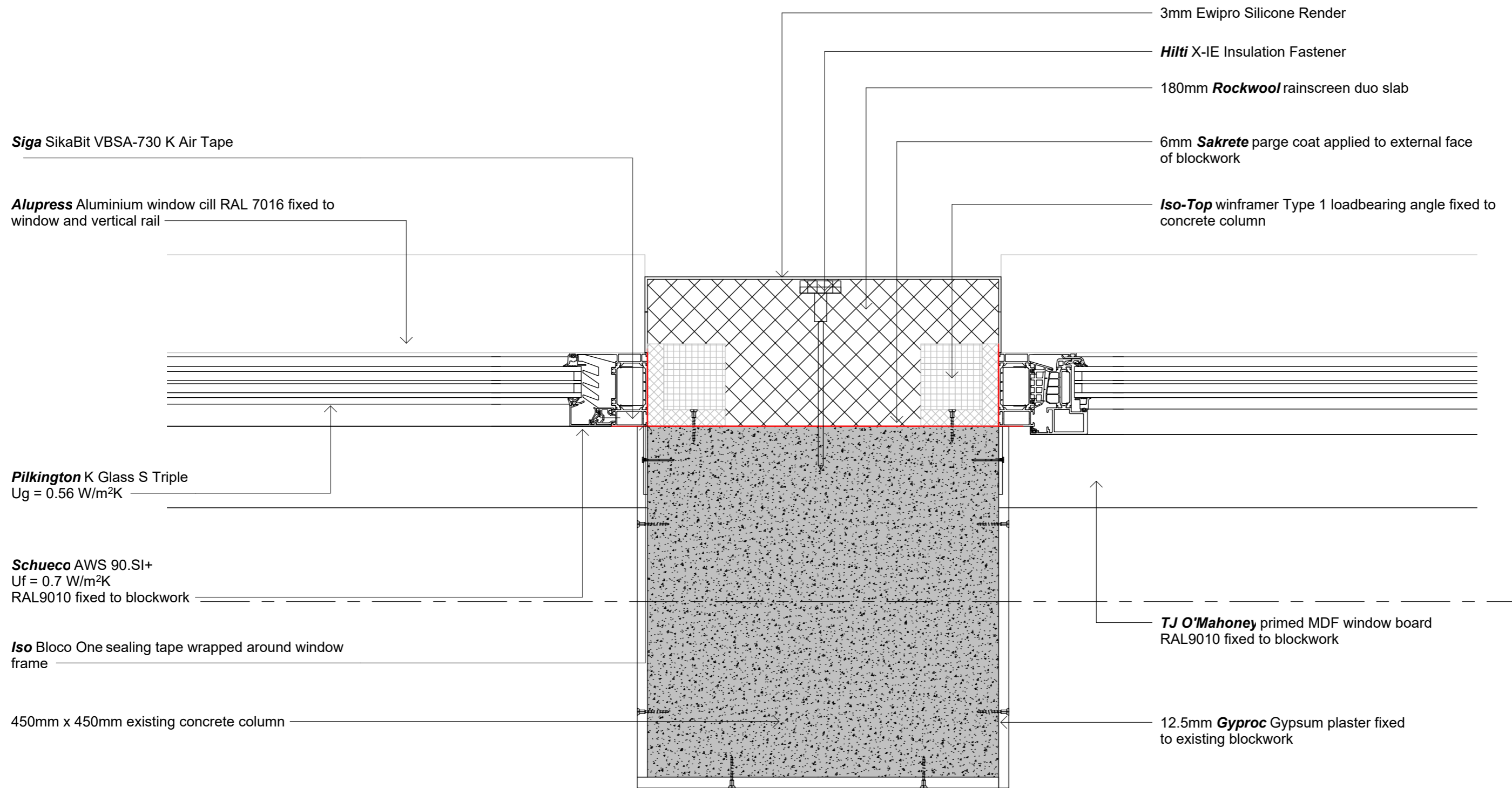
Visqueen radon barrier and DPM

150mm Concrete ringbeam

Hardcore



1 Door Threshold
1 : 5



1 Window Jamb
1 : 5

Elemental 15mm GFRC Cladding

Hilti X-IE Insulation Fastener

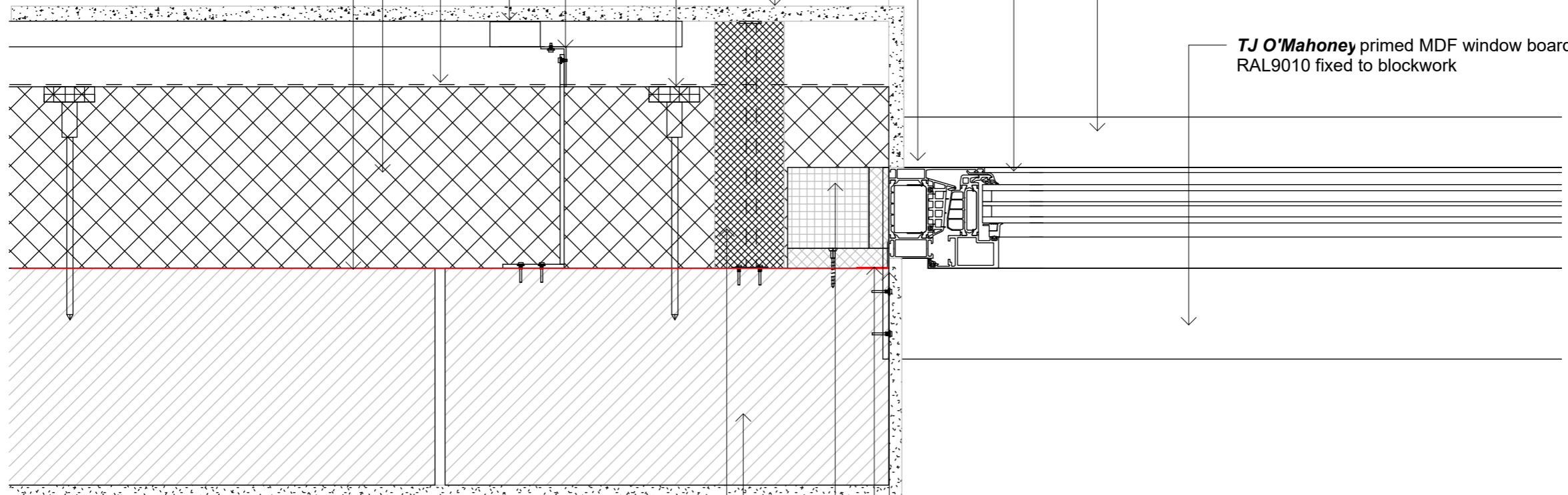
180mm **Hilti** MFT-FOX VT Thermal Bracket fixed to concrete block with **Hilti** plastic frame screw

Nvelope NV3 cladding hangers fixed to **Elemental** Vertical T-Rail

Pro Clima Solitex Fronta Quattro Windtight Breather Membrane fixed to insulation with staples

180mm **Rockwool** rainscreen duo slab

6mm **Sakrete** parge coat applied to external face of blockwork



Schueco AWS 90.SI+
Uf = 0.7 W/m²K
RAL9010 fixed to blockwork

Pilkington K Glass S Triple
Ug = 0.56 W/m²K

Alupress Aluminium window cill RAL 7016 fixed to window and vertical rail

TJ O'Mahoney primed MDF window board
RAL9010 fixed to blockwork

Siderise RH50 Cavity Barrier with Intrumescent Strip mechanically fixed with brackets to concrete beam

215mm existing block on flat

12.5mm **Gyproc** Gypsum plaster fixed to existing blockwork

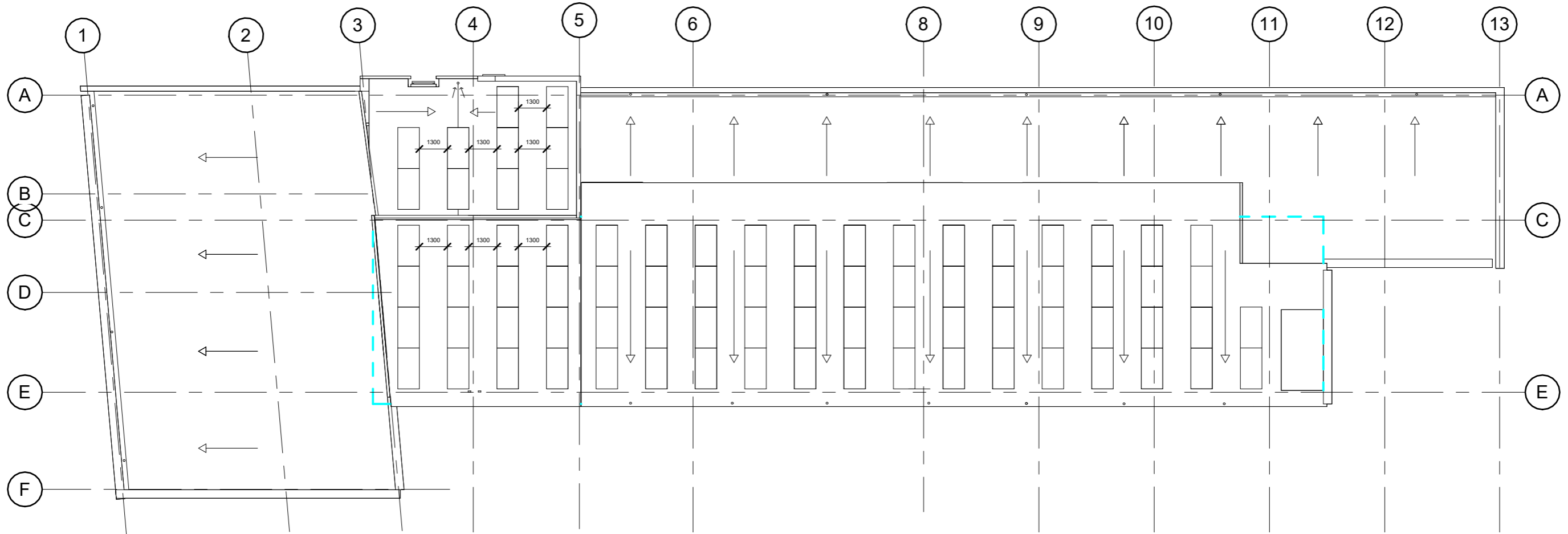
Iso-Top winframer Type 1 loadbearing angle fixed to concrete beam

Siga SikaBit VBSA-730 K Air Tape

Iso Bloco One sealing tape wrapped around window frame

Open Plan Office 210

1 Window Jamb w/ Wall
1 : 5



Drainage:

ACO HP vertical spigot outlet -
Dome grate water outlet

Falls:

1:60 fall on existing roof gained by
pouring concrete screed on slab at a 1:60 fall
1:60 fall on CLT roof gained by placing roof panels at 1:60 slope

Rainwater outlets 100 diameter

